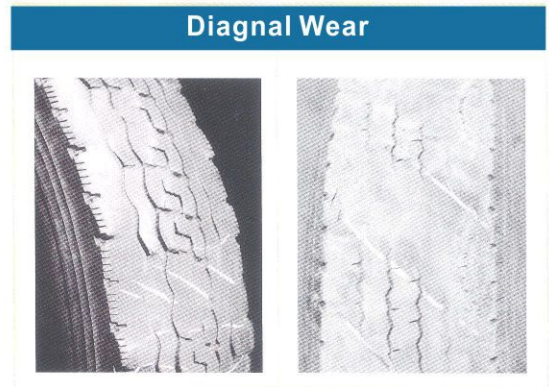


Miscellaneous

Irregular impact shock

When driving on the unpaved road, the wheels will spring up irregularly due to impact or vibration, which results in the abnormal wear normally, it happens in the rear axle (Fixed) and also happen in the economic vehicle which is lighter vehicle weight.



Fault of body of revolution

Abnormal tread wear can occur by fault of body of revolution like wheel around, axle shaft and so on. Especially, the following factors may result in abnormal wear as the irregular force conveyed around tire.

- Fault rotating parts of vehicle
- Run out of hub and spindle
- Loose bearing
- Run out of brake drum
- Unbalance of rotational wheel and tire



The type of wheel drive vehicle

Tread wear is much affected by whether vehicle is front wheel drive car or rear one.

	Tyre Wear	
	Front Axle	Rear Axle
FF	Rapid wear, one side wear	Rapid wear, one side wear
FR	Both - side wear, one side wear	Center wear

※ FF : Front engine front drive FR : Front engine rear drive

- ※ Due to the power steering wheel, frequent steering makes both-shoulder wear faster on the front tire.
 - ▶ Need to tire rotation (every 10,000km or 6,000 miles)

